

# How to install "Eternity IV Cylinder" with "Handle" onto the Lock

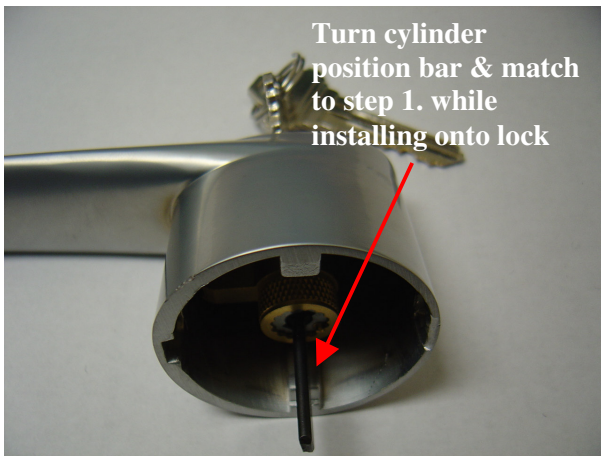
**Step 1. Attention to "Shaft in vertical position"**



**Step 2. Take key out from Cylinder**



**Step 3. Put Cylinder into "outside handle"(w/hole), then insert key into Cylinder from outside handle**



**Step 4. Hold key with cylinder & insert handle, position & press tight onto lock**



**Step 5. Turn key "counter-clockwise" & pull out key**



**Make sure both position should match together while put onto lock**

